

Anti-Human CCL2/MCP-1 Antibody (11k2)

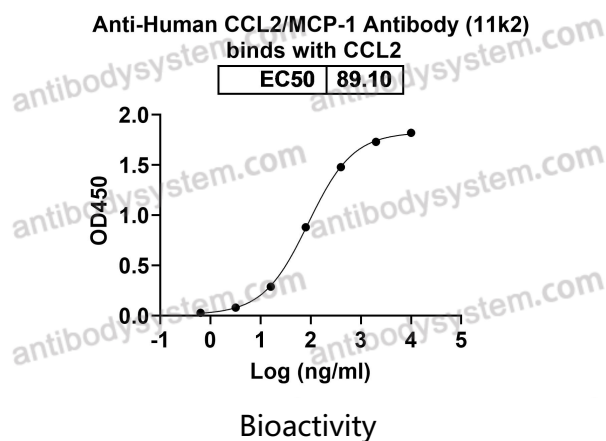
Summary

Catalog No.	FHC97810
Clone ID	11k2
Host species	Mouse
Conjugation	Unconjugated
Species reactivity	Human
Form	Liquid
Storage buffer	PBS, pH 6.0, 0.2M Arg
Concentration	1.07 mg/ml
Purity	>95% as determined by SDS-PAGE.
Clonality	Monoclonal
Isotype	IgG2a, kappa
Applications	Blocking, ELISA, FCM
Target	HC11, MCP-1, MCP1, Monocyte chemotactic protein 1, Monocyte chemotactic and activating factor, Small-inducible cytokine A2, SCYA2, MCAF, Monocyte secretory protein JE, C-C motif chemokine 2, Monocyte chemoattractant protein 1, CCL2
Purification	Protein A/G purified from cell culture supernatant.
Endotoxin level	Please contact with the lab for this information.
Accession	P13500

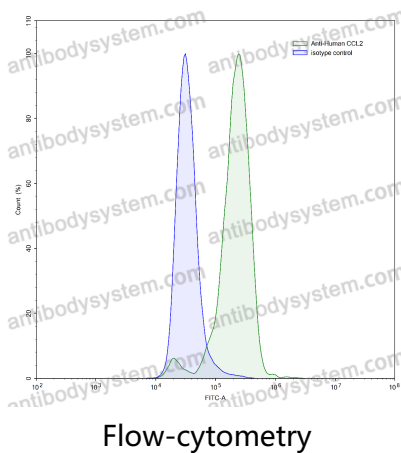
Stability and Storage Use a manual defrost freezer and avoid repeated freeze-thaw cycles.
Store at 4°C short term (1-2 weeks). Store at -20°C 12 months. Store at -80°C long term.

Note For research use only.

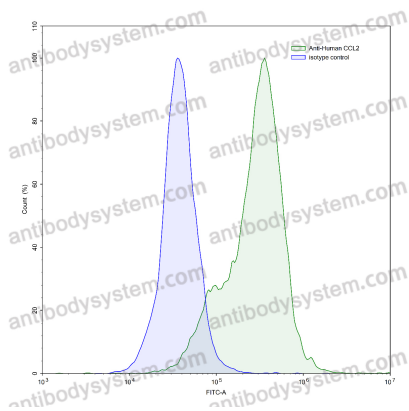
Data Image



Detects CCL2/MCP-1 in indirect ELISAs.



Flow-cytometry using anti-human CCL2 antibody. A549 cells were stained with an irrelevant antibody (Blue Histogram) or an anti-human CCL2 antibody monoclonal antibody (Catalog # FHC97810, Green Histogram) at a concentration of 5 µg/ml for 30 mins at RT. After washing, bound antibody was detected using a FITC conjugated goat anti-mouse antibody (Catalog # PMB96441) and cells analysed on a NovoCyte Flow Cytometer.



Flow-cytometry

Flow-cytometry using anti-human CCL2 antibody. LPS treated THP-1 cells were stained with an irrelevant antibody (Blue Histogram) or an anti-human CCL2 antibody monoclonal antibody (Catalog # FHC97810, Green Histogram) at a concentration of 5 µg/ml for 30 mins at RT. After washing, bound antibody was detected using a FITC conjugated goat anti-mouse antibody (Catalog # PMB96441) and cells analysed on a NovoCyte Flow Cytometer.