

Anti-mCherry-plus® Tag Antibody (SAA0406)

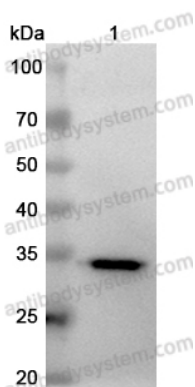
Summary

Catalog No.	RXX51301
Clone ID	SAA0406
Host species	Mouse
Species reactivity	Anaplasma marginale
Form	Liquid
Storage buffer	0.01M PBS, pH 7.4.
Concentration	1 mg/ml
Purity	>95% as determined by SDS-PAGE.
Clonality	Monoclonal
Isotype	VHH-mFc
Applications	ELISA, IF, WB
Target	MCherry fluorescent protein, mCherry, Fluorescent protein raspberry, Tag Antibody,dsred,RFP
Purification	Protein A/G purified from cell culture supernatant.
Endotoxin level	Please contact with the lab for this information.
Accession	X5DSL3, Q5S3G8
Stability and Storage	Use a manual defrost freezer and avoid repeated freeze-thaw cycles. Store at 4°C short term (1-2 weeks). Store at -20°C 12 months. Store at -80°C long term.
Note	For research use only.

Description

This antibody (SAA0406) binds both mCherry and DsRed.

Data Image



Western Blot

Recombinant Protein lysates were subjected to SDS PAGE followed by western blot with mCherry Tag antibody (RXX51301) at 1 μ g/ml.

Lane 1: Recombinant mCherry Protein([YXX51301](#))

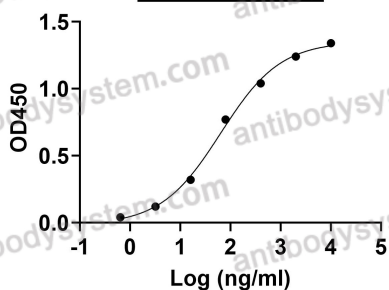
Second Ab: Goat Anti-Mouse IgG H&L Polyclonal antibody, HRP (PMB96431) at 0.1 μ g/mL.

Predict MW: 32 kDa

Observed MW: 32 kDa

Anti-mCherry-plus® Tag Antibody (SAA0406) binds with mCherry

EC50	63.70
------	-------



Bioactivity

Detects mCherry/dsRed in indirect ELISAs.