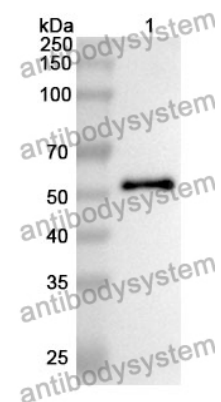


Anti-ALDH1A1 Polyclonal Antibody

Summary

Catalog No.	PHB85101
Host species	Rabbit
Tested applications	ELISA: 1:4000-1:8000, IHC: 1:50-1:100, WB: 1:2000-1:8000
Species reactivity	Human
Immunogen	E. coli - derived recombinant Human ALDH1A1 (Met1-Ser501).
Form	Liquid
Storage buffer	0.01M PBS, pH 7.4, 50% Glycerol, 0.05% Proclin 300.
Clonality	Polyclonal
Isotype	IgG
Applications	ELISA, IHC, WB
Target	Aldehyde dehydrogenase, cytosolic, Retinal dehydrogenase 1, ALDH-E1, RALDH1, Aldehyde dehydrogenase family 1 member A1, ALDH1A1, ALDH1, RALDH 1, ALDC, ALHDI, PUMB1
Purification	Purified by antigen affinity column.
Accession	P00352
Stability and Storage	Use a manual defrost freezer and avoid repeated freeze thaw cycles. Store at 2 to 8°C for frequent use. Store at -20 to -80°C for twelve months from the date of receipt.
Note	For research use only.

Data Image



WESTERN BLOT

Recombinant Protein lysates were subjected to SDS PAGE followed by western blot with ALDH1A1 antibody (PHB85101) at 1 µg/ml.

Lane 1: Recombinant protein

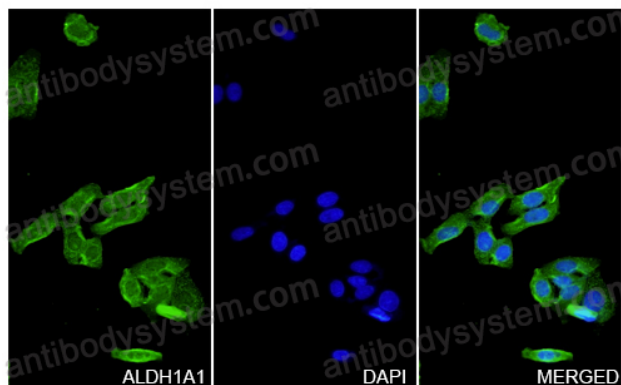
Second Ab: Goat Anti-Rabbit IgG H&L Polyclonal antibody, HRP (PTB96431) at 0.1 µg/mL.

Predict MW: 57 kDa

Observed MW: 57 kDa

ALDH1A1 in HepG2 Cell Line.

The HepG2 cells were fixed with 4% paraformaldehyde (20 min), and then blocked with 5% goat serum for 1h. And the cells were incubated for 2h at 37°C with ALDH1A1 (PHB85101) at 7.6 µg/ml. The section was then incubated with Goat Anti-Rabbit IgG (Alexa Fluor-488) preabsorbed at 1/100 dilution (Shown in green) for 1 hour at room temperature. Nuclear DNA was labelled with DAPI (shown in blue).



Immunocytochemistry/ Immunofluorescence